

Saving Time & Money with Coastal Pile Cutters International, LLC

Removing an existing dock or pier prior to its replacement can adversely affect your project's profit margin. The longer the removal process takes, the more costly it is. We can cut your pilings at or below the mud line in just minutes, thereby saving you days in the piling removal process. Piling cuts up to 54 inches in diameter can be made in minutes. Square, round, octagonal, and steel-jacketed pilings, as well as pile caps and tie beams, are cut with the same shearing process. We provide our services nationwide. We look forward to the opportunity to quote on your next piling removal project.

Removing Dock Pilings in a Ship Channel

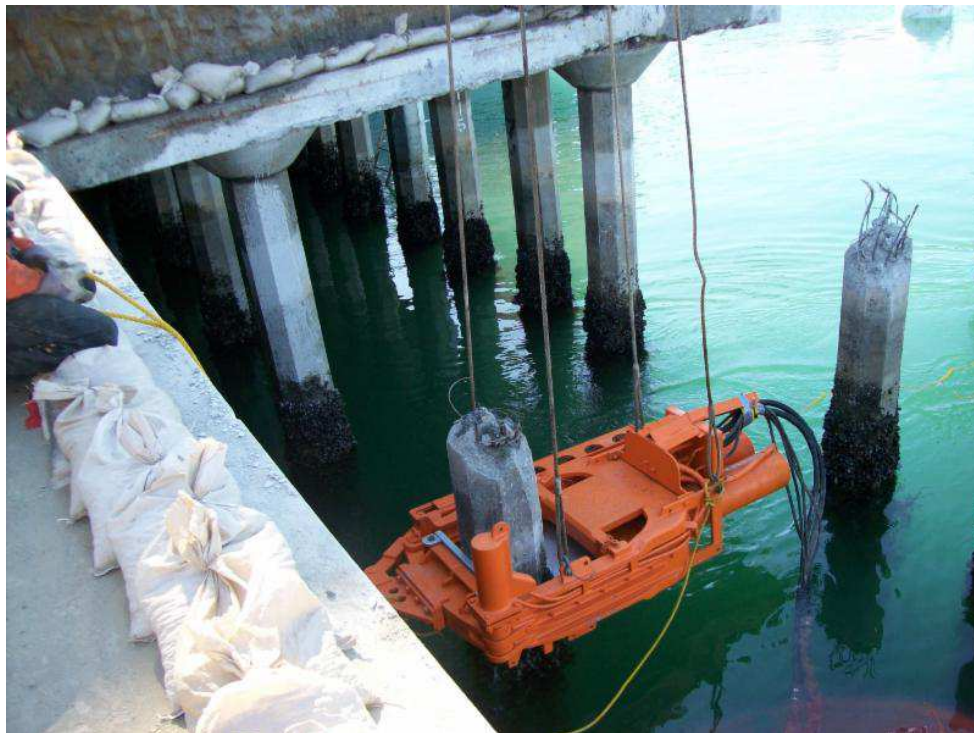
We made quick work of removing over 100 pilings in a three-day period on this time-sensitive project in Seattle, WA. By using our pile cutting services, the contractor was able to advance the new piling installation process by two weeks. Working from dock side, the contractor was able to swing each cut piling to a waiting flatbed trailer where they were transported to the contractor's laydown area. The 18-inch octagon piling contained six 1-inch pieces of #8 rebar. All cuts were made a minimum of one foot below mud line.



Positioning for the Cut



Lowering the shear into position for each cut takes just minutes.



Lowering the shear to mud line and making the cut completes the task.